

**East Lancashire Spoke Team**

The Mount  
Whalley Road  
Accrington  
Lancashire  
BB5 5DE

Tel: 01254 226390  
Fax: 01254 872880

**Central & West Lancashire Spoke Team**

1 Ashfield Road  
Chorley  
PR7 1LH

Tel: 01772 645761  
Fax: 01772 773545

**Fylde Coast Spoke Team**

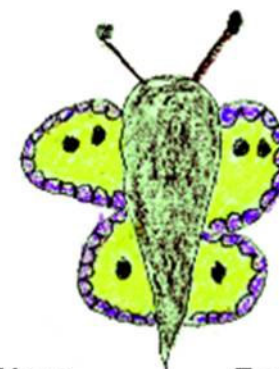
Unit 1  
Blackpool Technology Management Centre  
Faraday Way  
Bispham  
Blackpool  
FY2 0JW

Tel: 01253 657470  
Fax: 01253 657479

**Lancashire Early Intervention Service**

Hope – Health – Recovery

# Getting Involved and Having Your Say



Hope                      Recovery  
Health

[www.hope-health-recovery.org.uk](http://www.hope-health-recovery.org.uk)  
Email: [info@hope-health-recovery.org.uk](mailto:info@hope-health-recovery.org.uk)

# Getting Involved and Having Your Say

***Here at the Lancashire Early Intervention Service we value service users and carers opinions, ideas and feedback regarding quality of care and the development of the service.***

There are many opportunities for getting involved in the development of the service, such as:-

- ❖ Receiving feedback from time to time about developments in the service and in client and carer participation.
- ❖ Receiving invitations to occasional events like conferences for clients and carers.
- ❖ Participating in local client or carer consultancy group (a group that gives feedback to the Lancashire Early Intervention Service, advises on developments, elects representatives to planning groups etc).
- ❖ ***Getting involved in planning or carrying out research within the Lancashire Early Intervention Service.***
- ❖ Getting involved in recruiting Lancashire Early Intervention staff.
- ❖ Taking part in occasional postal surveys about aspects of the Lancashire Early Intervention Service.
- ❖ Participating in occasional focus groups.

- ❖ Taking part in occasional telephone surveys about aspects of Lancashire Early Intervention Service.
- ❖ Opportunities for employment within the Lancashire Early Intervention Service.

Are you interested in getting involved and having your say? Here is what two service users have said about helping with the development of the service:-

*“To give something back was the least I could do. Giving something back was my way of saying thank you.”*

*“I have been involved with the Lancashire Early Intervention Service for some time now, attending various meetings and seminars. In view of this, it is not only been an extremely informative, challenging and fantastic experience, I had a voice and it was listened to!”*

For further information on these opportunities please contact your EIS Care Co-ordinator, or view the Lancashire EIS Website for further information on feedback.

**[www.hope-health-recovery.org.uk](http://www.hope-health-recovery.org.uk)**

You can also have your say by completing comment cards. Please ask your EIS Care Co-ordinator for a comment card.